

WH 6700

Structure in ductile cast iron and alluminium alloy structure

Ratio 29:1 - Reduction unit with worm wheel and irreversible worm-screw.

(Reverse motion is possible only when the operator acts on the relevant controls, therefore no brake is required).

Manual clutch for drum engagement – disengagement

Direct line pull force (as measured by spring scale gauge): 6700 kg at the 1st rope layer

Towing capacity*: 20100 kg at the 1st rope layer

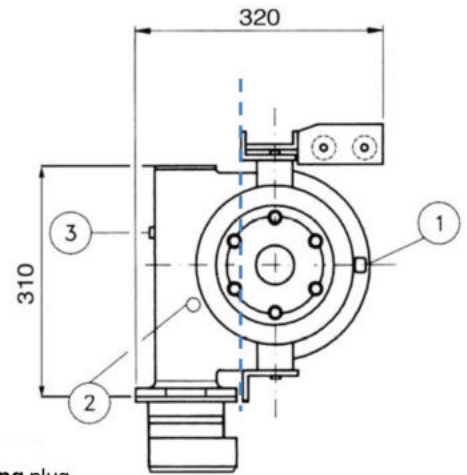
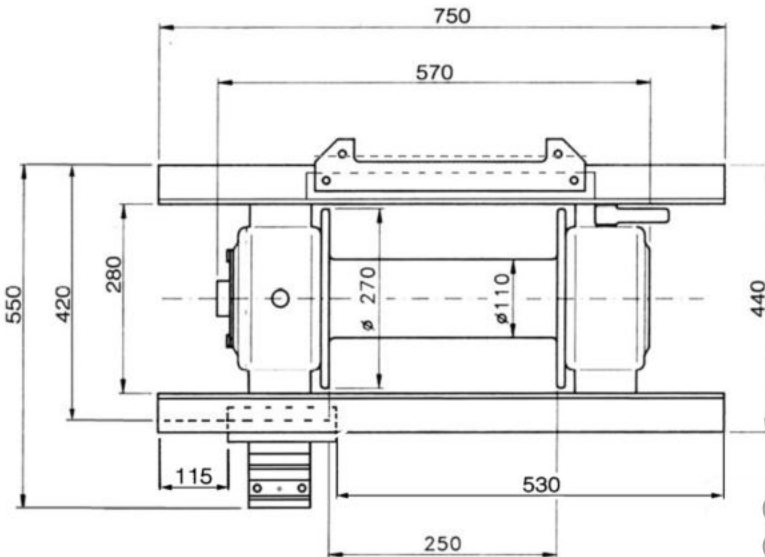
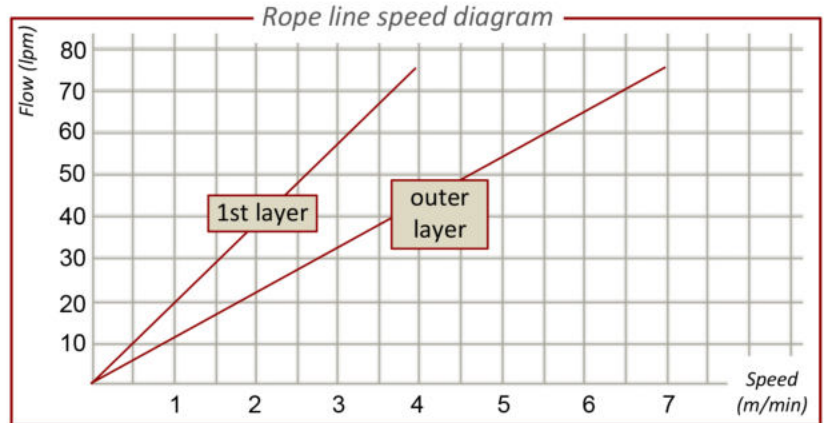
Recomm.d rope length: \varnothing 14mm max 60m

Zinc-plated steel fairlead rollers

Total weight w/out rope: 80 kg

Max P (relief valve adj.): 110 bar

Suggested flow to the motor: 75 l/min



- ① Oil filling plug
- ② Oil level plug
- ③ Oil emptying plug

ROPE LAYER	TOWING * CAPACITY	DIRECT LINE PULL	ROPE LENGTH
1°	20100 kg	6700 kg	6,10m
2°	16020 kg	5340 kg	13,80m
3°	13200 kg	4400 kg	23,00m
4°	11397 kg	3799 kg	33,80m
5°	9960 kg	3320 kg	46,20m
6°	8850 kg	2950 kg	60,10m

Max capacity of spooled rope: 60m \varnothing 14mm

* = Pulling capacity (estimated weight of the vehicle to be towed on a flat surface, free wheels) uses to be about 3 times as the direct line pull as measured by spring scale.